

LIKO

JEPPESSEN

OZZANO EMILIA

GUGLIELMO ZAMBONI

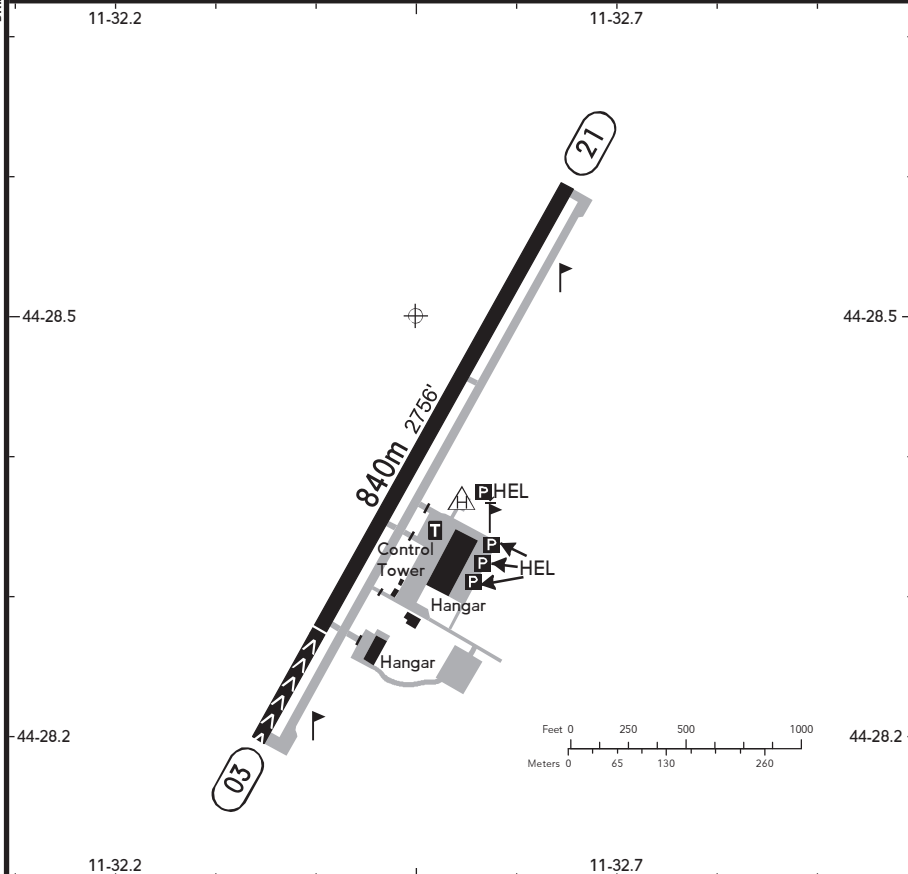
13 JAN 17 (19-2)

ITALY

BRIEFING STRIP™

LOCATION Elev 105' /32m N44 28.5 E011 32.5	RADIO OZZANO RADIO 128.450 (it, en)	ADMITTED AIRCRAFT 
--	--	-----------------------

SCALE 1:10000



⊙ PAPI (HEL only)

RWY No	Dimension (m) - Surface	TORA (m)	LDA (m)	Strength	Lights
03	840 x 18 Asphalt	840	700		---
21		840	840		

NOTE: Refer to Bologna (LIPE) Area Information.

**Traffic circuit**

Traffic circuit at 1000' AGL.

**Miscellaneous**

HEL: Point OSCAR intercept PAPI 12 at 1000' for the helipad (at night only).

Heliport lights and aerodrome beacon are radio controlled on freq 130.000 standard PCL procedures.

Avoid overflying built-up areas near AD.